

# B-21 Beddown Main Operating Base 2 (MOB 2) or MOB 3 at Dyess AFB or Whiteman AFB

ENVIRONMENTAL IMPACT STATEMENT



## Public Scoping Presentation for the B-21 Beddown Main Operating Base 2 or 3 at Dyess AFB or Whiteman AFB Environmental Impact Statement

April 2023

*Integrity - Service - Excellence*



# Purpose of Public Scoping

- ▶ Provide the public with information regarding the B-21 beddown of Main Operating Base (MOB) 2 and MOB 3 that the Air Force is proposing to evaluate in this Environmental Impact Statement (EIS)
- ▶ Describe the National Environmental Policy Act (NEPA) Process and objectives of the EIS
- ▶ Provide an Overview of Proposed Alternatives and Environmental Resources Considered for Analysis
- ▶ Receive Public Input on Proposed Action and Alternatives, as well as other reasonable alternatives

# The National Environmental Policy Act (NEPA)



- ▶ Federal law that requires agencies to identify and consider the environmental consequences of implementing proposals.
- ▶ NEPA requires a rigorous process to be followed prior to making a final decision, including consideration of comments.
- ▶ The analysis of environmental consequences is presented in an EIS, which accomplishes the following objectives:
  - Identifies and describes the affected environment
  - Evaluates potential impacts from the proposed alternatives
  - Identifies permits or proposed mitigations that would avoid, minimize, or reduce the potential for adverse environmental impacts
- ▶ The NEPA process concludes with a Record of Decision that identifies which alternative is selected and outlines any mitigation measures that are required.



# Background of the Proposed Action

- ▶ The Department of Defense is developing a new bomber aircraft, the B-21 “Raider,” which will:
  - Eventually replace existing B-1 and B-2 bomber aircraft
  - Operate under the direction of Global Strike Command
  - Have both conventional and nuclear roles
  - Penetrate and survive advanced air defense environments
- ▶ The B-21 is projected to enter service in the mid-2020s.
- ▶ The Air Force intends to build at least 100 B-21 aircraft.





# Background of the Proposed Action (continued)

- ▶ The B-21 basing action is a series of beddowns as identified through the Air Force's Strategic Basing Process.
  - Identified Dyess AFB, Ellsworth AFB, and Whiteman AFB as potential installations to beddown the B-21
- ▶ In 2021, the Air Force completed an EIS for the B-21 MOB 1 beddown, which analyzed Dyess AFB and Ellsworth AFB as alternatives.
- ▶ On June 3, 2021, the Air Force signed a Record of Decision for the MOB 1 EIS and selected Ellsworth AFB as the MOB 1 beddown location



# Background of the Proposed Action (continued)

- ▶ This EIS will evaluate locations for the beddown of MOB 2 and MOB 3.
- ▶ Since the B-21 basing action is a series of beddowns, if one of the candidate bases is selected as the MOB 2 location, then the remaining candidate base would subsequently become the MOB 3 beddown location.
- ▶ Should any MOB 3 beddown actions exceed those analyzed in this EIS, the Air Force would conduct additional NEPA analysis, as appropriate.



# Purpose and Need for the Proposed Action

- ▶ The purpose of the Proposed Action is to:
  - Implement the goals of the National Defense Strategy by modernizing the U.S. bomber fleet capabilities
- ▶ The B-21 Raider is being developed to:
  - Deliver conventional ordnance
  - Support the nuclear triad
  - Provide a visible and flexible nuclear deterrent capability that will assure allies and partners through the United States' commitment to international treaties

# Purpose and Need for the Proposed Action

(continued)



- ▶ The need for the Proposed Action is to:
  - Support deterrence capabilities by basing the B-21 at installations that can support the Air Force Global Strike Command's MOB 2 mission.
- ▶ The B-21 will provide the only stealth bomber capability and capacity needed to deter, and if necessary, defeat our adversaries in an era of renewed great power competition.
- ▶ The installation will support training of crewmembers and personnel in the operation and maintenance of the B-21 aircraft in an appropriate geographic location that can provide sufficient airfield, facilities, infrastructure, and airspace to support B-21 training and operations.



# Alternatives Development

- ▶ NEPA requires the development and identification of reasonable alternatives to a proposed action.
- ▶ The Air Force applied their Strategic Basing Process to identify reasonable alternatives for the B-21 basing action:
  - Identified all bases that could reasonably support the B-21 mission and evaluated them using objective criteria (such as runway length, runway strength, ramp and hangar dimensions)
  - All non-bomber bases were eliminated due to limited runway length, ramp and hangar deficiencies, and insufficient concrete strength
  - Resulting bases included Barksdale AFB, Dyess AFB, Ellsworth AFB, Minot AFB, and Whiteman AFB



# Alternatives Development (continued)

- ▶ Barksdale and Minot AFBs were eliminated to minimize impacts to the B-52 fleet and mission, which would continue to operate beyond 2050
- ▶ Remaining bases were Ellsworth AFB, Dyess AFB, and Whiteman AFB
  - Whiteman AFB was eliminated to ensure nuclear capabilities remained uninterrupted and active at Whiteman AFB until MOB 1 was established
  - Remaining bases evaluated in the MOB 1 EIS were Ellsworth AFB and Dyess AFB





# Proposed Alternatives (continued)

- ▶ As previously stated, the Air Force selected Ellsworth AFB as the MOB 1 location in the B-21 MOB 1 EIS Record of Decision (June 2021).
- ▶ Based on the Strategic Basing Process previously described, and the selection of Ellsworth AFB for the MOB 1 location, the Air Force is preparing the MOB 2 EIS for the remaining two locations.



# Proposed Alternatives

- ▶ The Air Force is preparing this EIS for two proposed alternatives:
  - Dyess AFB Alternative (beddown MOB 2 at Dyess AFB, Texas)
  - Whiteman AFB Alternative (beddown MOB 2 at Whiteman AFB, Missouri)





# Proposed Action

- ▶ The Proposed Action would beddown MOB 2, which includes:
  - B-21 Operations Squadrons
  - Weapons Instructor Course
  - Operational Test and Evaluation Squadron
  - Weapons Generation Facility (WGF)
  
- ▶ The B-21 MOB 2 beddown would include the following common elements:
  - Personnel
  - Airfield Operations
  - Airspace and Range Utilization
  - Facilities and Infrastructure
  - Weapons Generation Facility



# Proposed Action (continued)

## ▶ Personnel

- Require approximately 2,500 military personnel
- Roughly 3,100 dependents will accompany these personnel

## ▶ Airfield Operations

- Nearly 7,000 operations per year for all squadrons
- About 40% of all arrival and closed pattern operations and 5% of all departure operations would be conducted between 10 p.m. and 7 a.m.
- An average of 3.12 sorties would be conducted per day



# Proposed Action (continued)

## ▶ Airspace and Range Utilization

- The B-21 can adequately train in Class A airspace
- Military Operations Areas (MOAs) and Air Traffic Control Assigned Airspaces (ATCAAs) provide additional flexibility and integration opportunities
- Airspace and range training areas that would be utilized are specific to each alternative
- No plans to modify any airspace as a result of the Proposed Action under either alternative

## ▶ Facilities and Infrastructure

- Requirements are specific to each alternative
- Planners factored base-specific site constraints to minimize mission impact, maximize facility reuse, and minimize cost



# Proposed Action (continued)

## ▶ Weapons Generation Facility (WGF)

- Facility requiring new construction at the selected base
  - 50-acre construction footprint; final 20-acre compound
  - Approximately 82,000 square feet of facilities
  - Approximately 275,000 square feet of parking/pavement areas
  - Double fenced (7,100 linear feet)
- Provides safer and more secure location for storage of nuclear munitions
- Provides a consolidated facility within a single, controlled site that accommodates maintenance, storage, and support functions under one roof to provide enhanced operations and security measures for the entire mission



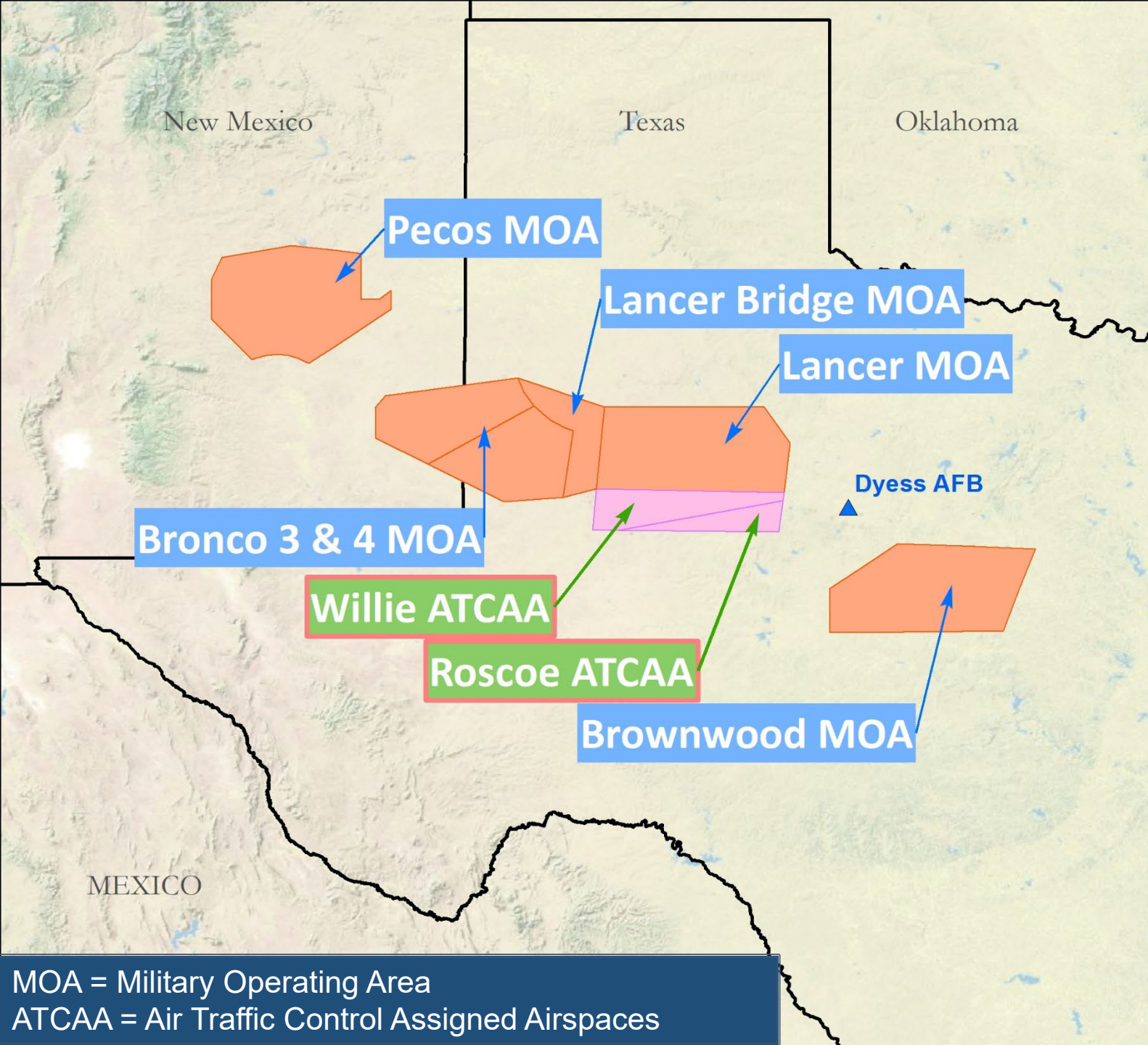


# Dyess AFB Alternative

- ▶ Establishes MOB 2 at Dyess AFB, Texas
- ▶ Personnel
  - Approximately 4,300 individuals associated with the B-1 mission would depart
  - Approximately 5,600 individuals associated with the B-21 mission
  - End-state personnel would increase by approximately 1,300 individuals
- ▶ Airfield Operations
  - End-state airfield operations would decrease by approximately 2,000 operations

# Dyess AFB Alternative

## Airspace and Range Utilization



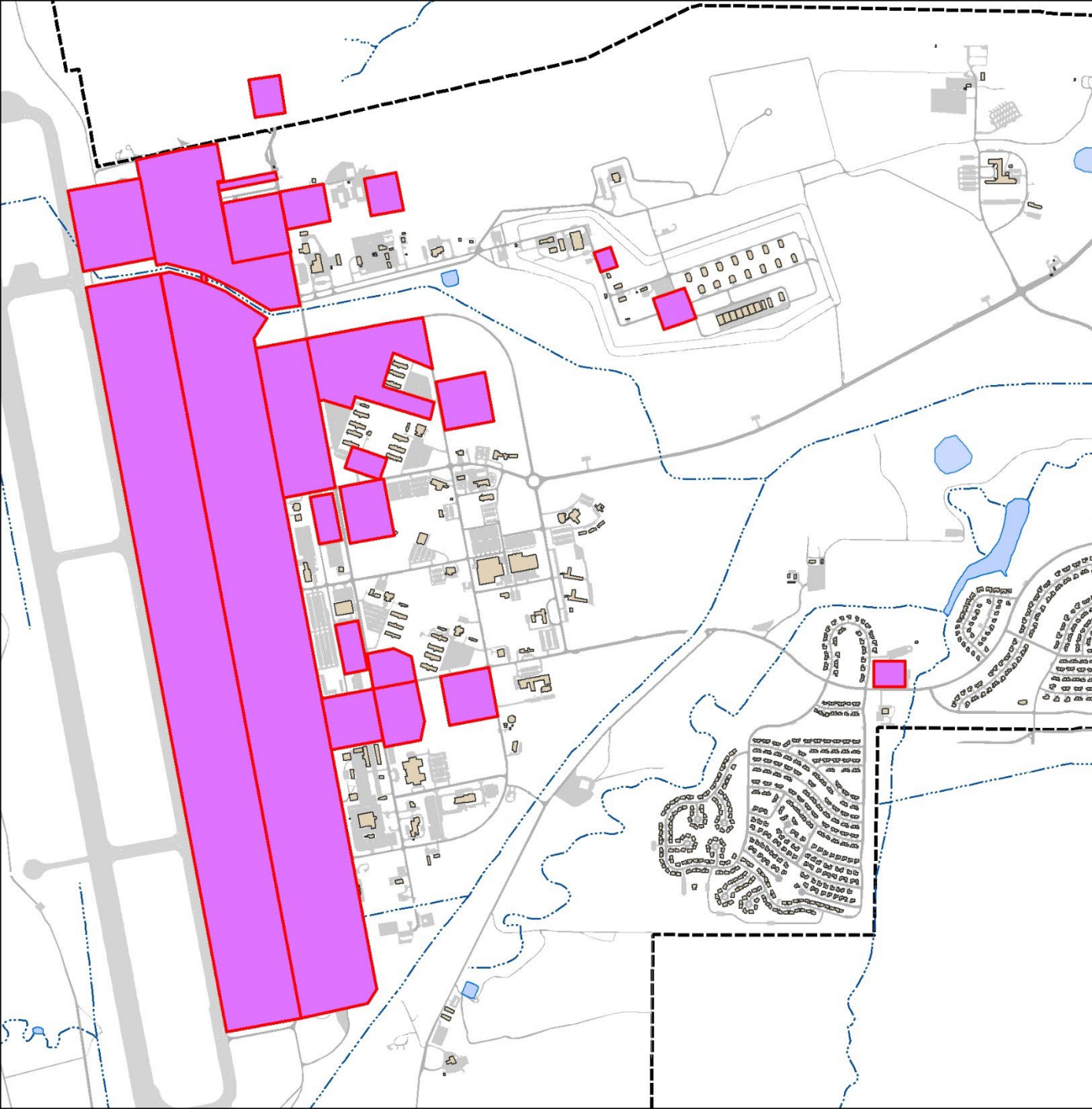
- B-21 training areas would include:
  - Pecos MOA
  - Bronco MOA
  - Lancer Bridge MOA
  - Lancer MOA
  - Brownwood MOA
  - Willie-Roscoe ATCAA
- Includes all ATCAAs associated with the MOAs above
- No plans to modify any of the airspace listed above as a result of the Proposed Action

MOA = Military Operating Area  
ATCAA = Air Traffic Control Assigned Airspaces

# Dyess AFB Alternative

## Facilities and Infrastructure

- Air Force planners considered base-specific site constraints
  - Minimize mission impact
  - Maximize facility reuse
  - Minimize cost
- Base-specific plan consists of:
  - 4.2 million square feet of construction
  - 600,000 square feet of renovation
  - 300,000 square feet of demolition
- Specific locations cannot be illustrated due to operational security concerns.
- General planned areas of construction are shown here.

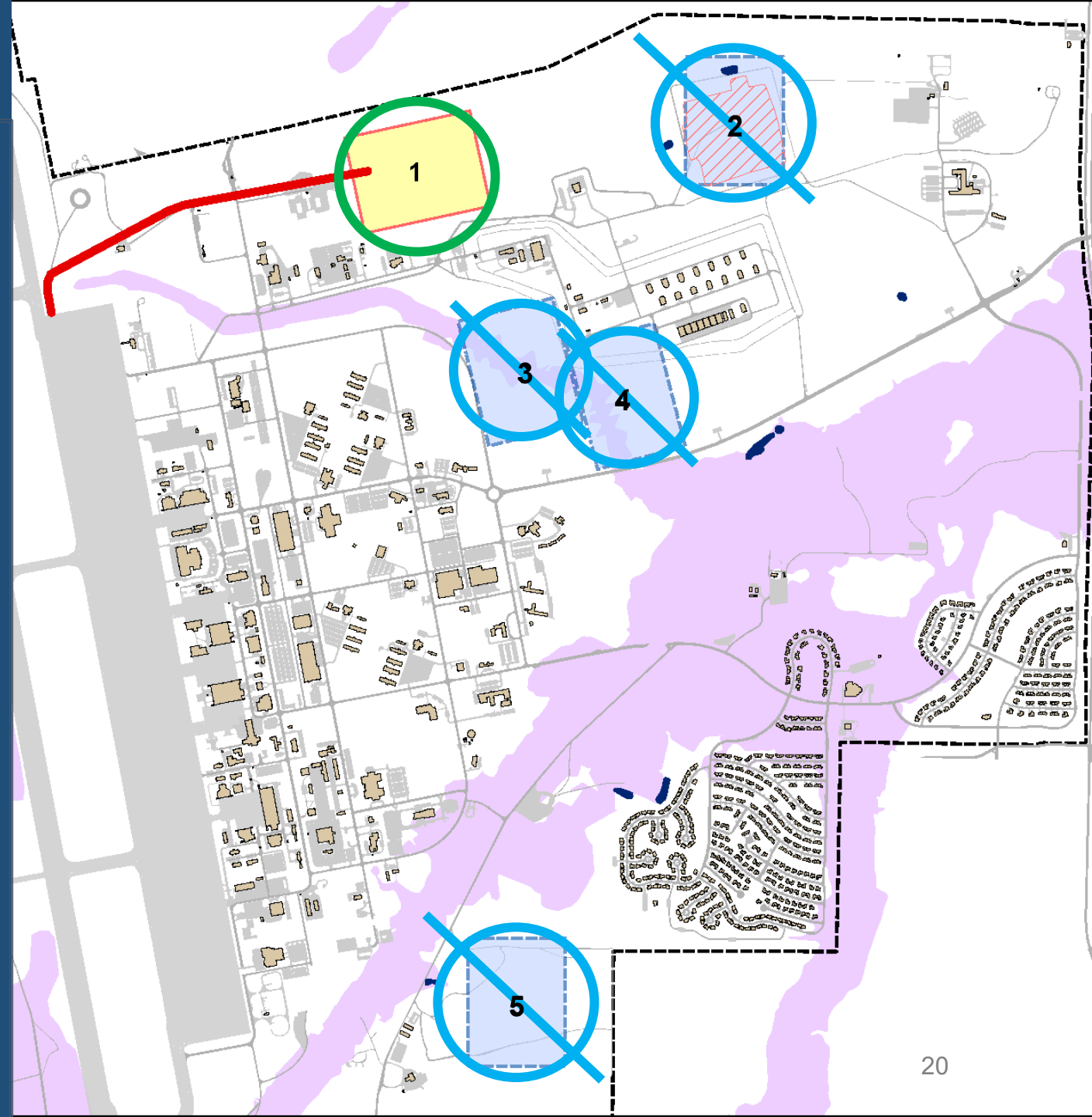




# Dyess AFB Alternative

## Weapons Generation Facility

- In the MOB 1 EIS, the Air Force Planners identified five possible locations.
- Four locations were eliminated due to the presence of one or more negative site evaluation criteria:
  - Location 2: high likelihood of unexploded ordnance
  - Locations 3 and 4: presence of floodplains
  - Location 5: operational readiness concerns
- Location 1 satisfied all evaluation criteria that are unique to the WGF and is being carried forward as part of the MOB 2 EIS.





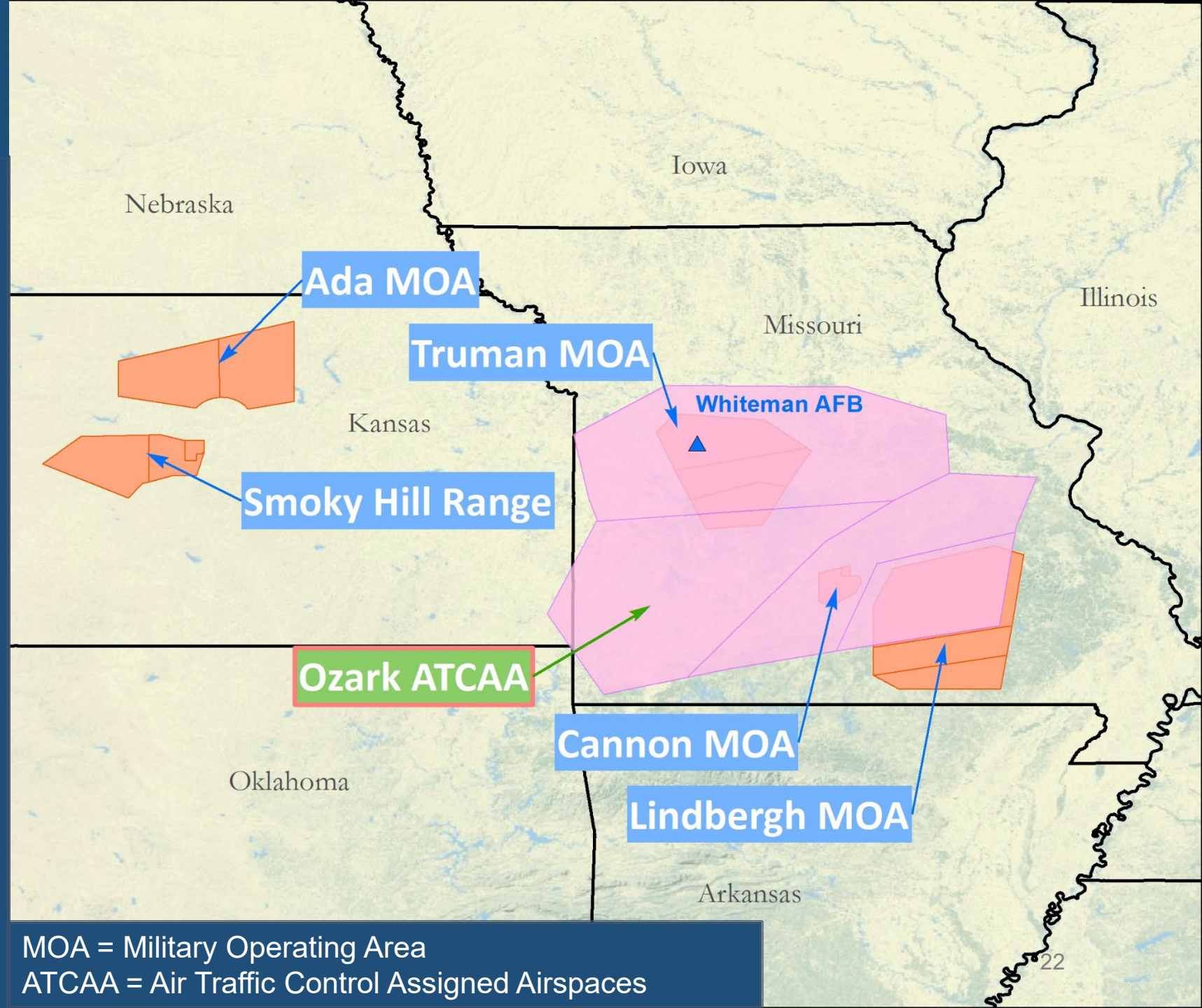
# Whiteman AFB Alternative

- ▶ Establishes MOB 2 at Whiteman AFB, Missouri
- ▶ Personnel
  - Approximately 4,600 individuals associated with the B-2 mission would depart
  - Approximately 5,600 individuals associated with the B-21 mission
  - End-state personnel would increase by approximately 1,000 individuals
- ▶ Airfield Operations
  - End-state airfield operations would increase by approximately 2,000 operations

# Whiteman AFB Alternative

## Airspace and Range Utilization

- Aircraft training areas would include:
  - Smoky Hill Range – Smoky MOA, Bison MOA and Restricted Airspace 3601
  - Ada MOA
  - Truman MOA
  - Cannon MOA
  - Lindbergh MOA
  - Ozark ATCAA
- Includes all ATCAAs associated with the MOAs above
- No plans to modify any of the airspace listed above as a result of the Proposed Action



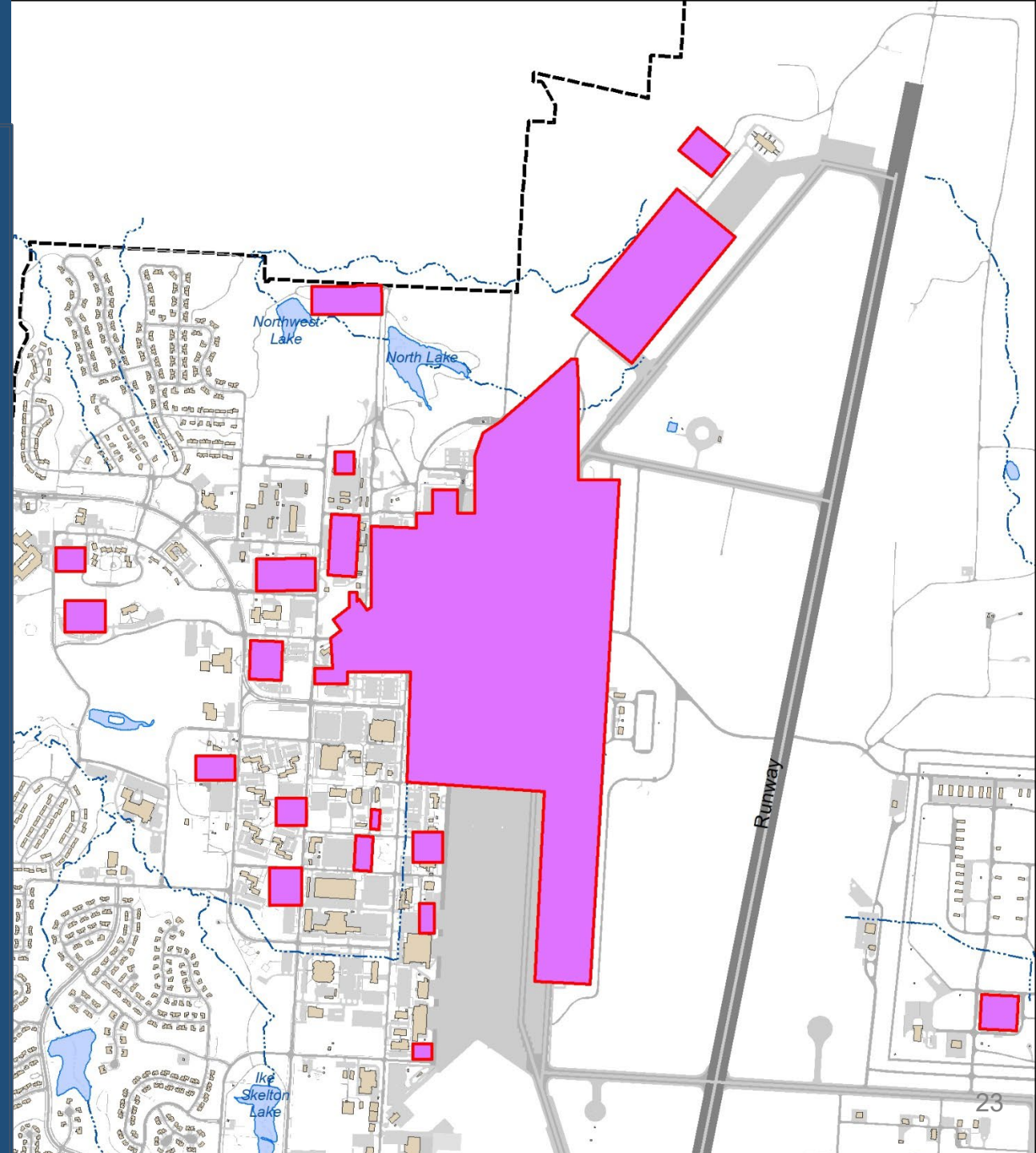
MOA = Military Operating Area  
ATCAA = Air Traffic Control Assigned Airspaces



# Whiteman AFB Alternative

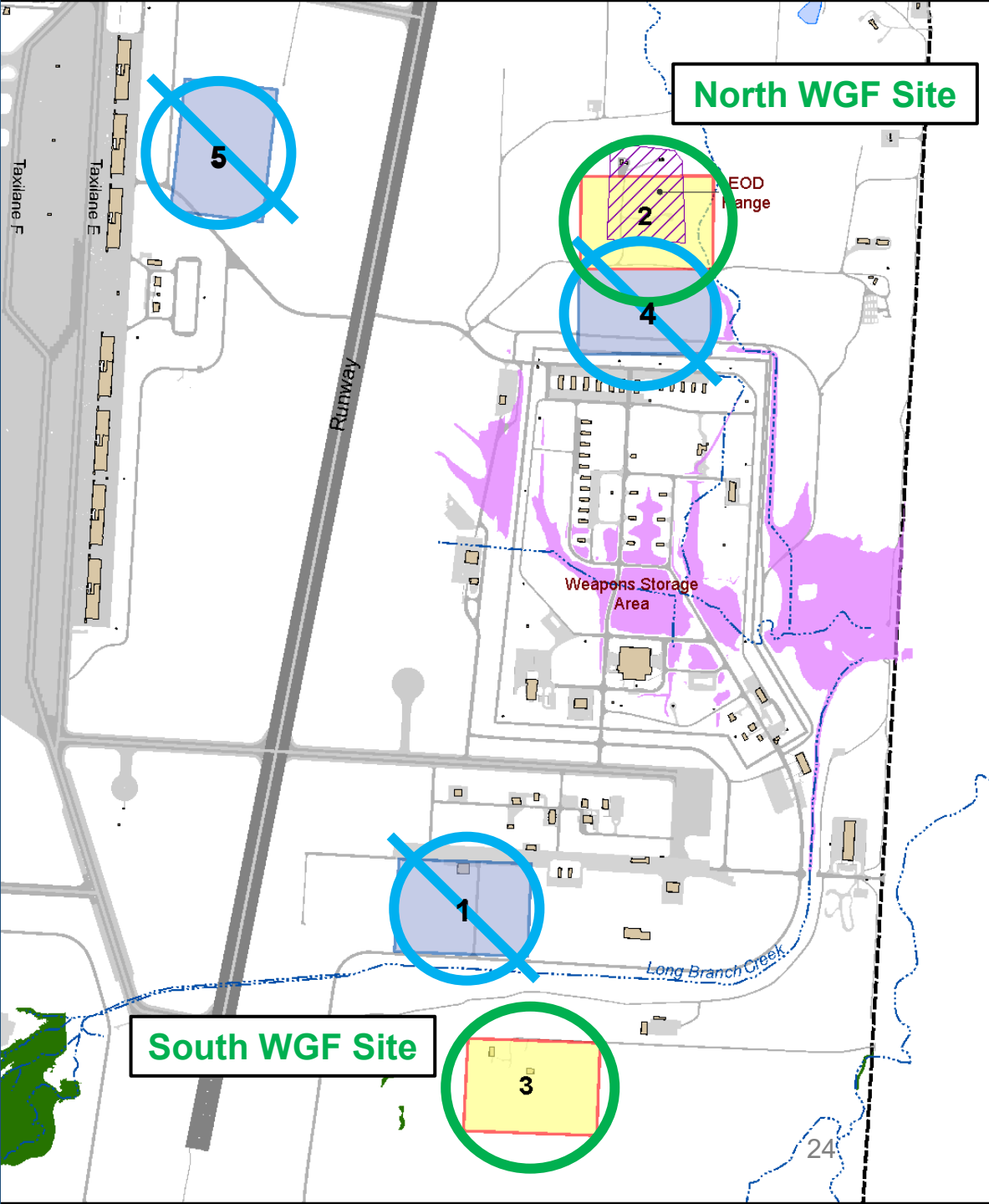
## Facilities and Infrastructure

- Air Force planners considered base-specific site constraints
  - Minimize mission impact
  - Maximize facility reuse
  - Minimize cost
- Base-specific plan consists of:
  - 600,000 square feet of construction
  - 1.7 million square feet of renovation
  - 85,000 square feet of demolition
- Specific locations cannot be illustrated due to operational security concerns.
- General planned areas of construction are shown here.



# Whiteman AFB Alternative

## Weapons Generation Facility



- Air Force Planners identified five possible locations.
- Three locations were eliminated:
  - Location 1: impacts to current missions and an existing weapons storage area; security related issues; weapons safety concerns
  - Location 4: site constraints for another weapons storage area; impacts to current missions
  - Location 5: airfield site constraints; proximity to existing infrastructure; interference with navigational aids; dock access issues; requires access to the airfield
- Locations 2 and 3 were selected as proposed locations because they satisfied site evaluation criteria unique to the WGF.
- Location 2 is referred to as the North WGF site and location 3 is referred to as the South WGF site.



# Whiteman AFB Alternative - WGF

- ▶ Includes two subalternatives based on WGF North and South locations
- ▶ North WGF Site Subalternative
  - Requires construction of access roads (approximately 177,000 square feet)
  - Requires the relocation of the existing EOD range
- ▶ South WGF Site Subalternative
  - Requires construction of up to three access roads (approximately 51,000 square feet)
  - One roadway would be constructed over an existing ERP site



# No Action Alternative

- ▶ NEPA requires the alternatives analysis in the EIS to include a “No Action Alternative.”
- ▶ However:
  - The B-21 program is a major Department of Defense initiative to ensure the U.S. nuclear triad is and remains effective; therefore, the B-21 program will be implemented whether or not the No Action Alternative is selected.
  - If selected, the Air Force would re-evaluate their B-21 phasing approach using military judgement and implement the basing at another, undetermined location.
- ▶ Therefore, under the No Action Alternative:
  - The B-21 would not beddown at either Dyess or Whiteman AFB.
  - Each installation would continue their individual missions at current levels, which will be used as the baseline for the analysis.



# Summary of EIS Alternatives

- ▶ The EIS will analyze two action alternatives for establishing MOB 2.
  - Dyess AFB Alternative
  - Whiteman AFB Alternative
    - North WGF Site Subalternative
    - South WGF Site Subalternative
- ▶ The EIS will also analyze the No Action Alternative.





# Potential Environmental Resources Analyzed

- ▶ Air Quality
- ▶ Airspace Use and Management
- ▶ Biological Resources
- ▶ Cultural Resources
- ▶ Environmental Justice
- ▶ Hazardous Materials and Solid Wastes
- ▶ Health and Safety
- ▶ Land Use
- ▶ Noise
- ▶ Physical Resources (water and soils)
- ▶ Socioeconomics
- ▶ Transportation





# B-21 MOB 2 EIS Anticipated Milestone Schedule



## March 2023

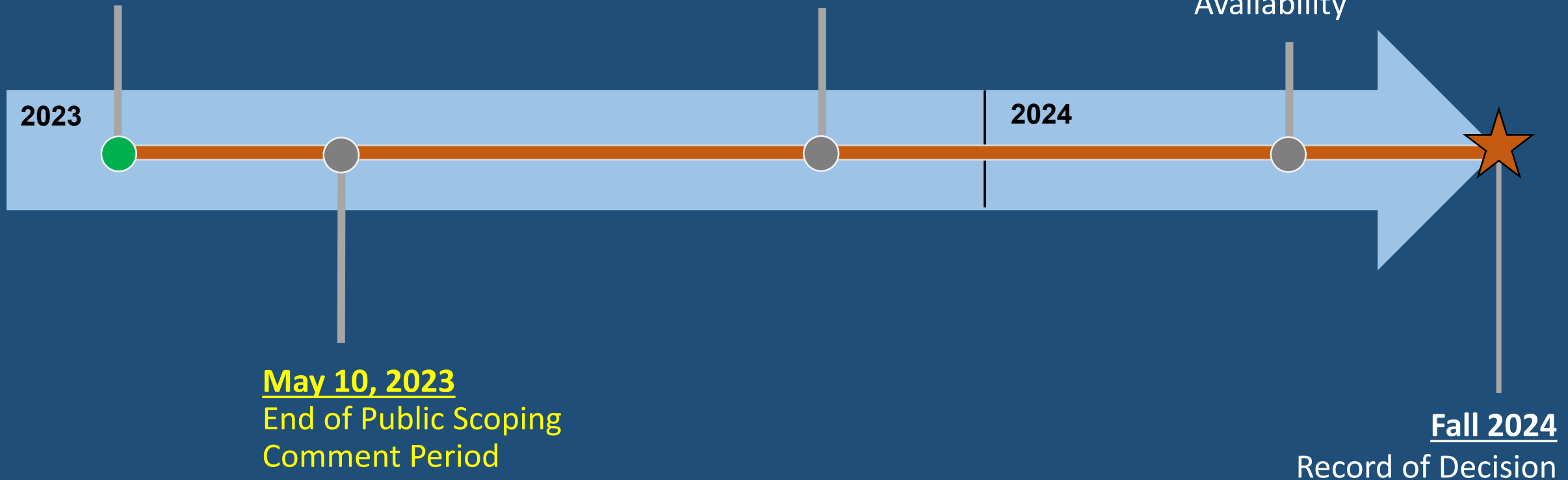
- EIS Notice of Intent
- Start of Public Comment Period

## Fall 2023

- Draft EIS Notice of Availability
- Public Comment Period
- Public Hearings

## Summer 2024

Final EIS Notice of Availability



**May 10, 2023**  
End of Public Scoping  
Comment Period

**Fall 2024**  
Record of Decision



# Public Scoping Comment Procedures

- ▶ Public Scoping is the first stage in the EIS process
- ▶ The Air Force is seeking feedback from federal, state, and local agencies, tribes, and the public for the development of the EIS
- ▶ The Public Scoping Phase:
  - Provides public opportunities to learn about and comment on the project
  - Provides the Air Force with opportunity to identify issues of interest or concern to frame the environmental analysis and more effectively shape the alternatives to be considered
  - Public scoping comments will be part of the official record and a summary will be included in the Draft EIS

# Public Scoping Comment Procedures (continued)



- ▶ Comments can be submitted the following ways:
  - Visit the project website at [www.B21EIS.com](http://www.B21EIS.com)
  - Via written comment forms provided at in-person meetings
  - Mail comments directly to the Air Force (see next slide)
- ▶ To be considered in the Draft EIS, all substantive comments should be received or post-marked by no later than **May 10, 2023**.
  - Substantive comments identify potential alternatives, information, and analyses relevant to the proposed action.
- ▶ All substantive comments received, whether written or electronic, will be given equal consideration.
- ▶ To receive a notice of availability of the Draft EIS, please sign up for the mailing list by visiting the project website.



# Comment Submittal Information

Submit comments online:

**[www.B21EIS.com](http://www.B21EIS.com)**

Or submit comments in writing:

**Leidos**

**ATTN: B-21 EIS**

**12304 Morganton Hwy #572**

**Morganton, GA 30560**

Comments should be postmarked by **May 10, 2023**  
for consideration in the Draft EIS. Please include "B-21 EIS" in attention  
line of all correspondence.

# Air Force Contact Information



For questions please contact:

Dyess AFB Public Affairs

Whiteman AFB Public Affairs

325.696.4820

660.687.5727

# B-21 Beddown Main Operating Base 2 (MOB 2) or MOB 3 at Dyess AFB or Whiteman AFB

## ENVIRONMENTAL IMPACT STATEMENT



## What is the National Environmental Policy Act?

The National Environmental Policy Act (NEPA) is our national charter for making informed decisions while considering environmental impacts. NEPA requires all federal agencies making a proposal that may significantly impact the environment to consider:

- ▶ A range of reasonable alternatives.
- ▶ Potential environmental or health consequences.
- ▶ Tribal, government agency, and public input.



### NEPA Public Involvement

NEPA and the Department of the Air Force (DAF) regulations require tribal, government agency, and public participation throughout the environmental impact analysis process. Tribal, government agency, and public participation is an integral part of the Environmental Impact Statement (EIS) process. The purpose of soliciting input is to identify interested parties and relevant issues so they can be considered in the EIS.

The first stage of the EIS process is public scoping. During scoping, the DAF is actively seeking feedback from Federal, state and local agencies, tribes, and the public in development of the EIS. The public scoping phase provides opportunities to learn about and comment on the project and provides the DAF with the opportunity to identify issues of interest or concern to frame the environmental analysis and more effectively shape the range of alternatives to be considered.



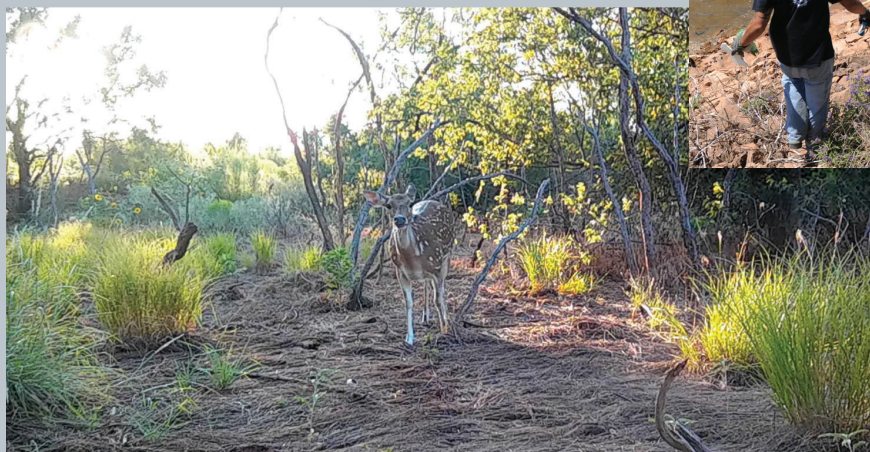
# B-21 Beddown Main Operating Base 2 (MOB 2) or MOB 3 at Dyess AFB or Whiteman AFB

ENVIRONMENTAL IMPACT STATEMENT



## What Environmental Resources will be Studied in the EIS?

- ▶ Air Quality
- ▶ Airspace Use and Management
- ▶ Biological Resources
- ▶ Cultural Resources
- ▶ Environmental Justice
- ▶ Hazardous Materials and Solid Wastes
- ▶ Health and Safety
- ▶ Land Use
- ▶ Noise
- ▶ Physical Resources (Water and Soils)
- ▶ Socioeconomics
- ▶ Transportation
- ▶ Utilities





# B-21 Beddown Main Operating Base 2 (MOB 2) or MOB 3 at Dyess AFB or Whiteman AFB

## ENVIRONMENTAL IMPACT STATEMENT



## What is the Background of the Project?

The Department of the Air Force (DAF) is developing a new bomber aircraft, the B-21 “Raider,” which will eventually replace existing B-1 and B-2 bomber aircraft. The beddown of the B-21 will take place through a series of beddowns at three Main Operating Bases (MOBs), referred to as MOB 1, MOB 2, and MOB 3. The DAF previously identified Ellsworth Air Force Base (AFB), Dyess AFB, and Whiteman AFB as potential installations to beddown the B-21 Raider. The DAF chose Ellsworth AFB for MOB 1; therefore, this EIS evaluates potential environmental consequences associated with establishing MOB 2 at the remaining two alternative bases: Dyess AFB or Whiteman AFB.

The B-21 basing action is a series of beddowns. If one of the candidate bases is selected for MOB 2, then the remaining base would subsequently become the MOB 3 beddown location. Air operations and personnel numbers for the MOB 3 beddown are not anticipated to exceed those analyzed in this EIS and construction activities are anticipated to be the same for either MOB location. Therefore, the analysis presented in this EIS represents potential impacts associated with the beddown actions at either location.

The MOB 2 and MOB 3 beddowns would include B-21 Operations Squadrons, Weapons Instructor Course (WIC), and Operational Test and Evaluation (OT&E) Squadron, as well as a Weapons Generation Facility (WGF). Consequently, in this EIS, potential impacts of these four components (i.e., Operations Squadrons, WIC, OT&E, and WGF) are analyzed for both alternative locations, Dyess AFB and Whiteman AFB.

The B-21 will operate under the direction of the Air Force Global Strike Command (GSC). The B-21 will have both conventional and nuclear roles and will be capable of penetrating and surviving in advanced air defense environments. It is projected to enter service in the 2020s, and the DAF intends to operate a minimum of 100 B-21 aircraft.



# B-21 Beddown Main Operating Base 2 (MOB 2) or MOB 3 at Dyess AFB or Whiteman AFB

## ENVIRONMENTAL IMPACT STATEMENT



## What is the Purpose and Need for the Proposed Action?

As stated in the 2022 National Defense Strategy, which includes the 2022 Nuclear Posture Review and the 2022 Missile Defense Review, the global security environment and “threats to the homeland have fundamentally changed.” The threats we face as a nation are increasingly transregional, multi-domain, and multi-functional. These threats frequently do not comply with international rules of law. They include ever-expanding, rapidly developing technologies of other nations.

Thus, the DAF must deter its adversaries, assure its allies, and be prepared to support operations that protect the homeland, respond to aggression with overlapping timelines, wage a global counter terrorism campaign in cooperation with our allies and partners, and improve our ability to respond to emerging threats.

### The DAF's Purpose of the Proposed Action is to:

- ▶ Implement the goals of the National Defense Strategy by modernizing the U.S. bomber fleet capabilities.
- ▶ The B-21 Raider is being developed to:
  - Carry conventional payloads.
  - Support the nuclear triad by providing a visible and flexible nuclear deterrent capability.
  - Assure allies and partners through the U.S. commitment to international treaties.



### The DAF's Need for the Proposed Action is to:

- ▶ Support deterrence capabilities by basing the B-21 at installations that can support the MOB 2 mission.
  - The B-21 will provide the only stealth bomber capability and capacity needed to deter, and if necessary, defeat our adversaries in an era of renewed great power competition.
  - The installation will support training of crewmembers and personnel in the operation and maintenance of the B-21 aircraft in an appropriate geographic location that can provide sufficient airfield, facilities, infrastructure, and airspace to support B-21 training and operations.





# B-21 Beddown Main Operating Base 2 (MOB 2) or MOB 3 at Dyess AFB or Whiteman AFB

## ENVIRONMENTAL IMPACT STATEMENT



## What are the Elements of the Proposed Action?

### Personnel

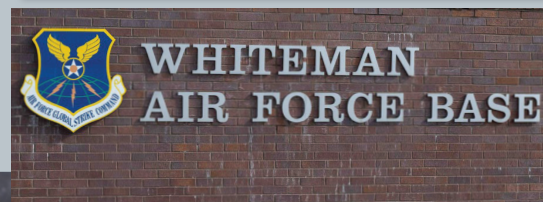
- ▶ Personnel associated with the B-21 MOB 2 mission would include military personnel and dependents.
- ▶ B-21 mission personnel would include operational and instructor pilots, as well as maintenance personnel to support the Operational Squadrons, WIC, OT&E, and WGF components.
- ▶ The DAF anticipates that the B-21 MOB 2 mission would include an estimated 5,500 total individuals consisting of approximately:
  - 2,500 military personnel
  - 3,100 dependents

### Airfield Operations

- ▶ The annual estimated number of total B-21 aircraft operations is approximately 7,000 per year.
- ▶ Forty percent of all arrival and closed pattern operations and 5 percent of all departure operations would be conducted between 10:00 p.m. and 7:00 a.m.
- ▶ On average, approximately 3.12 sorties would be conducted per day.

### Airspace and Range Utilization

- ▶ The B-21 can adequately train in Class A airspace using Federal Aviation Administration-filed flight plans; however, training in Military Operations Areas (MOAs) and Air Traffic Control Assigned Airspaces (ATCAAs) provide additional flexibility and integration opportunities.
- ▶ Dyess AFB would utilize Bronco, Brownwood, Lancer, Lancer Bridge and Pecos MOAs, as well as the Willie-Roscoe ATCAA.
- ▶ Whiteman AFB would utilize the Smoky Hill Range, Ada, Cannon, Lindbergh, and Truman MOAs, and the Ozark ATCAA.
- ▶ There are no plans to modify any of the airspace.



# B-21 Beddown Main Operating Base 2 (MOB 2) or MOB 3 at Dyess AFB or Whiteman AFB

## ENVIRONMENTAL IMPACT STATEMENT



## What are the Elements of the Proposed Action? (continued)

### Facilities and Infrastructure

- ▶ DAF planners:
  - Used the strengths of each base to optimize the B-21 beddown strategy.
  - Leveraged facilities and infrastructure at each base individually, factoring base specific site constraints, to minimize mission impact, maximize facility reuse, and minimize cost.
  - Identified infrastructure and facility needs by evaluating operational readiness, site constraints, and existing infrastructure.
- ▶ The Proposed Action involves construction, renovation, and demolition projects to support the B-21 MOB 2 basing action.



### Weapons Generation Facility

- ▶ The WGF is a unique facility that would be newly constructed at each B-21 beddown location and will provide a safe and secure location for the storage of DAF nuclear munitions.
- ▶ The WGF will require:
  - A construction footprint of approximately 50 acres and a final WGF compound size of approximately 20 acres.
  - Approximately 7,100 linear feet of double-fencing.
  - Approximately 8 acres of construction, consisting of roughly 82,000 square feet of facilities and 275,000 square feet of parking/pavement areas.
  - Roadway access unique to the location.
- ▶ The WGF provides a consolidated facility within a single, controlled site that accommodates maintenance, storage, and support functions under one roof to provide enhanced operations and security measures for the entire mission.
- ▶ The configuration of the facility allows for efficient movements of all assets in various configurations, which improves both the safety and security associated with mission requirements.





# B-21 Beddown Main Operating Base 2 (MOB 2) or MOB 3 at Dyess AFB or Whiteman AFB



## ENVIRONMENTAL IMPACT STATEMENT



## What is the Dyess AFB Alternative?

The Dyess AFB Alternative would establish MOB 2 at Dyess AFB, Texas, which includes all elements of the Proposed Action.

### Personnel

- ▶ Approximately 4,300 individuals associated with the B-1 mission would depart.
- ▶ Approximately 5,600 individuals are associated with the B-21 mission.
- ▶ End-state personnel would increase by approximately 1,300 individuals.

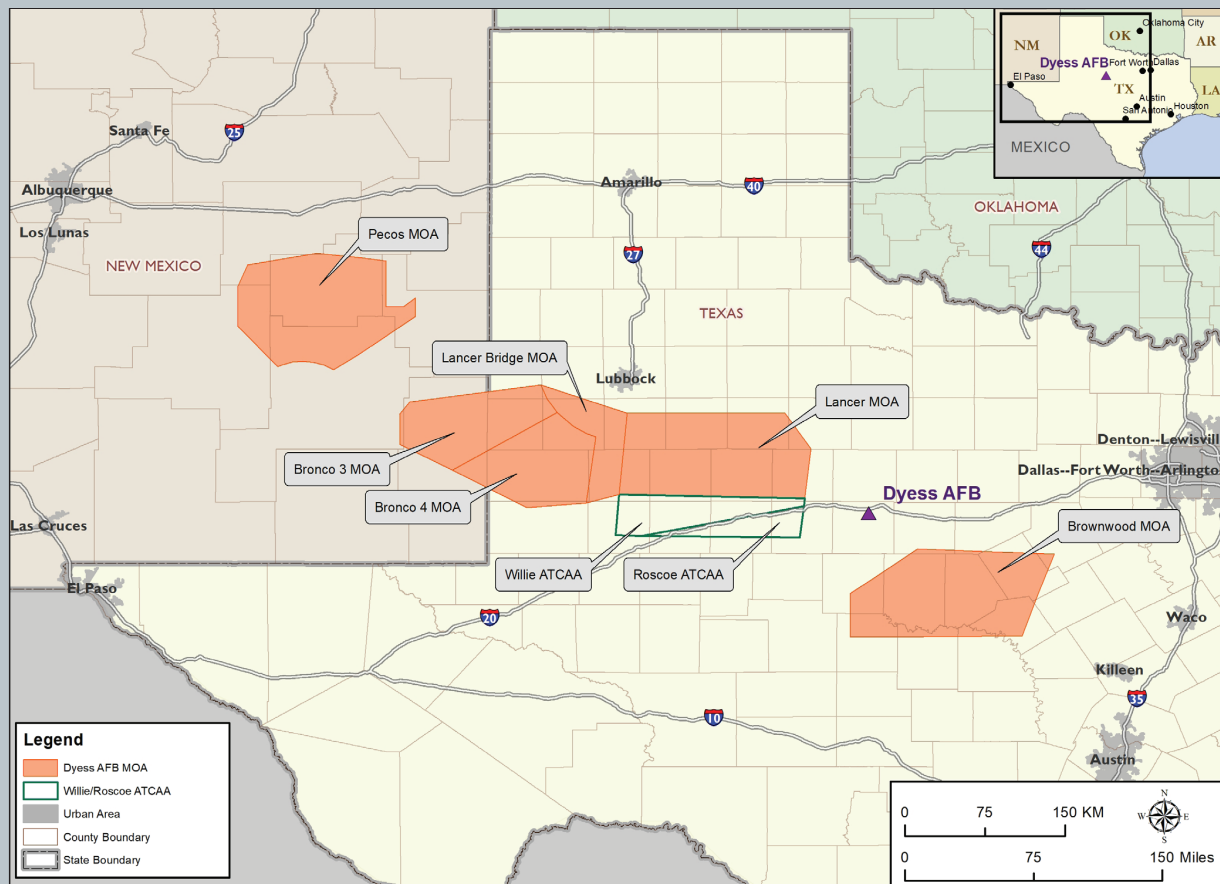
### Airfield Operations

- ▶ End-state airfield operations would decrease by approximately 2,000 operations.

### Airspace and Range Utilization

The map below shows the airspace units that the DAF would utilize under the Dyess AFB Alternative.

- ▶ Includes all associated ATCAAs.
- ▶ No plans to modify any of the airspace as a result of the Proposed Action.



# B-21 Beddown Main Operating Base 2 (MOB 2) or MOB 3 at Dyess AFB or Whiteman AFB

## ENVIRONMENTAL IMPACT STATEMENT



## What is the Dyess AFB Alternative? (continued)

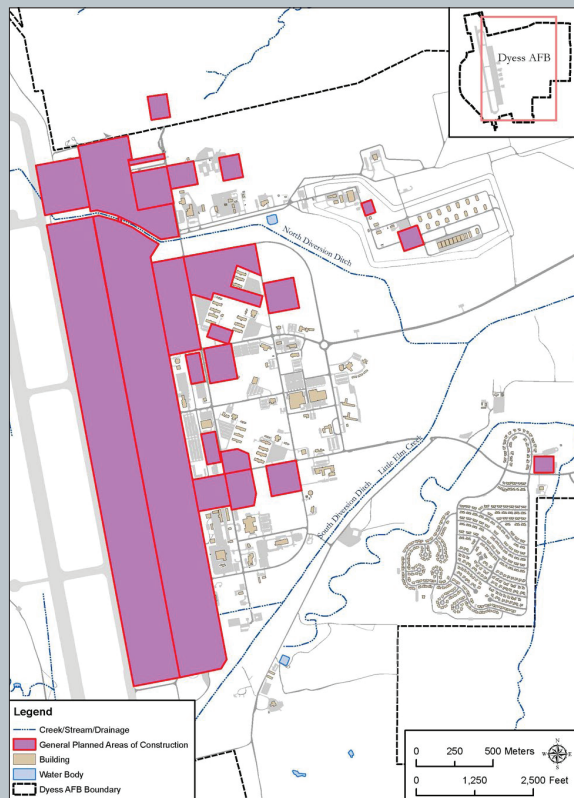
### Facilities and Infrastructure

DAF planners considered base-specific site constraints in order to:

- ▶ Minimize mission impact
- ▶ Maximize facility reuse
- ▶ Minimize cost

The Dyess AFB Alternative base-specific plan consists of approximately:

- ▶ 4.2 million square feet of construction
- ▶ 600,000 square feet of renovation
- ▶ 300,000 square feet of demolition

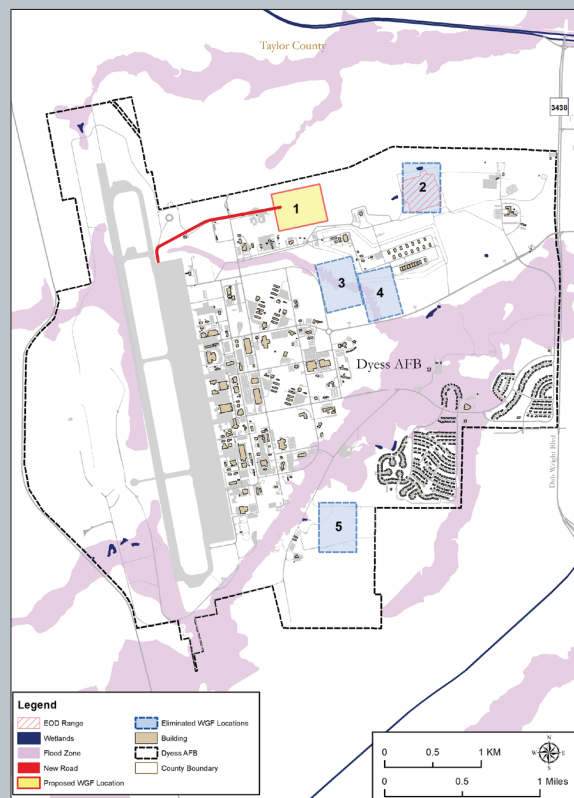


### Weapons Generation Facility

In the MOB 1 EIS, the DAF planners identified five possible locations for the WGF.

Four locations were eliminated due to the presence of one or more negative site evaluation criteria.

Location 1 satisfied all evaluation criteria that are unique to the WGF and is being carried forward as part of the MOB 2 EIS.



*\*Due to operational security concerns, the specific locations of the facilities cannot be illustrated. General planned areas of construction are shown here.*



# B-21 Beddown Main Operating Base 2 (MOB 2) or MOB 3 at Dyess AFB or Whiteman AFB



## ENVIRONMENTAL IMPACT STATEMENT



## What is the Whiteman AFB Alternative?

The Whiteman AFB Alternative would establish MOB 2 at Whiteman AFB, Missouri, which includes all elements of the Proposed Action.

### Personnel

- ▶ Approximately 4,600 individuals associated with the B-2 mission would depart.
- ▶ Approximately 5,600 individuals are associated with the B-21 mission.
- ▶ End-state personnel would increase by approximately 1,000 individuals.

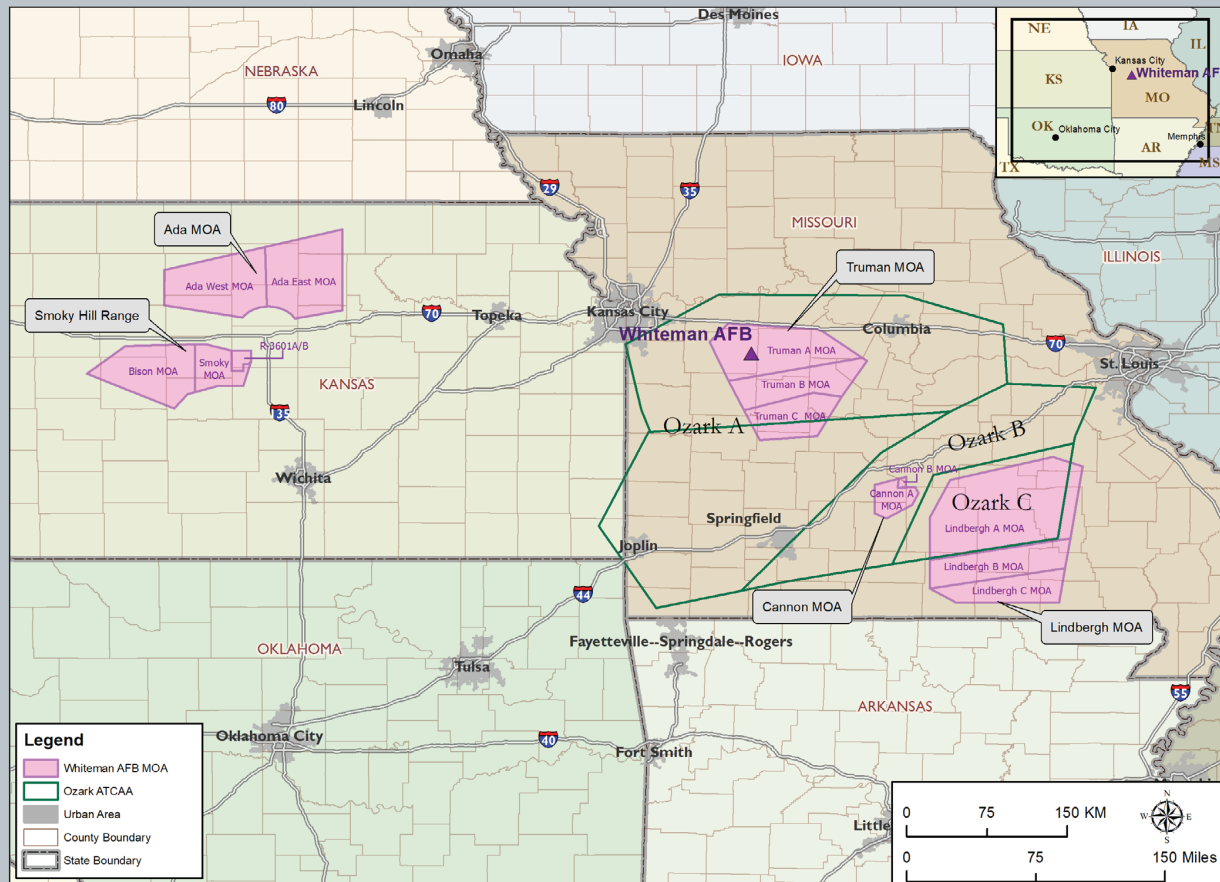
### Airfield Operations

- ▶ End-state airfield operations would increase by approximately 2,000 operations.

### Airspace and Range Utilization

The map below shows the airspace units that the DAF would utilize under the Whiteman AFB Alternative.

- ▶ Includes all associated ATCAAs.
- ▶ No plans to modify any of the airspace as a result of the Proposed Action.



# B-21 Beddown Main Operating Base 2 (MOB 2) or MOB 3 at Dyess AFB or Whiteman AFB

## ENVIRONMENTAL IMPACT STATEMENT



## What is the Whiteman AFB Alternative? (continued)

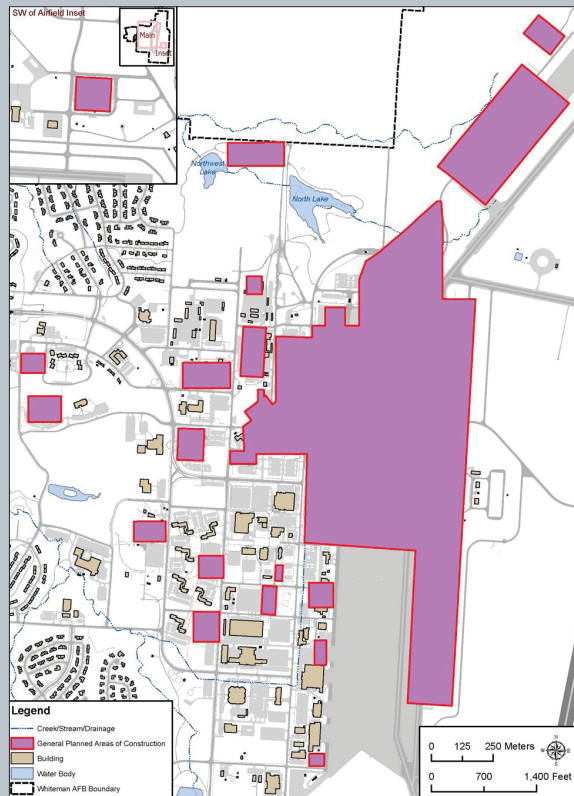
### Facilities and Infrastructure

DAF planners considered base-specific site constraints in order to:

- ▶ Minimize mission impact
- ▶ Maximize facility reuse
- ▶ Minimize cost

The Whiteman AFB Alternative base-specific plan consists of approximately:

- ▶ 600,000 square feet of construction
- ▶ 1.7 million square feet of renovation
- ▶ 85,000 square feet of demolition

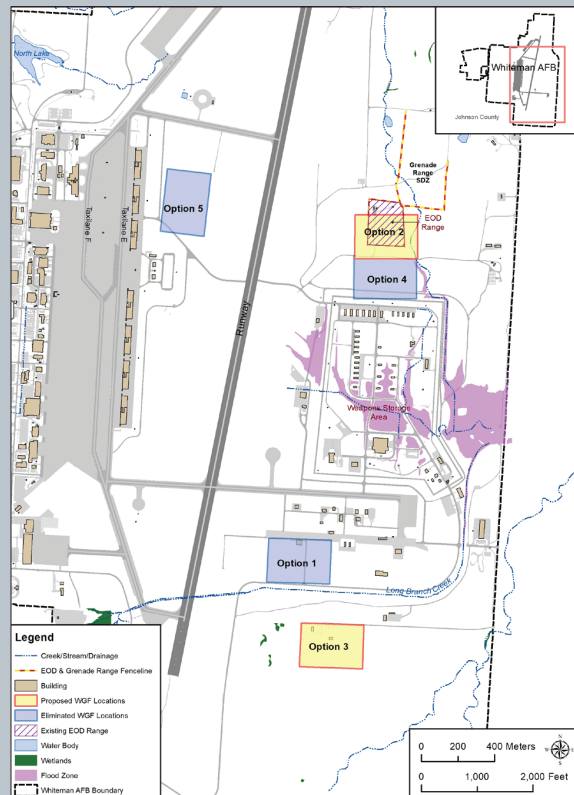


### Weapons Generation Facility

DAF planners identified five possible locations for the WGF, three of which were eliminated due to the presence of one or more negative site evaluation criteria. Locations 2 and 3 were selected as proposed locations because they satisfied site evaluation criteria unique to the WGF.

Location 2 is referred to as the **North WGF Site Subalternative**.

Location 3 is referred to as the **South WGF Site Subalternative**.



*\*Due to operational security concerns, the specific locations of the facilities cannot be illustrated. General planned areas of construction are shown here.*



# B-21 Beddown Main Operating Base 2 (MOB 2) or MOB 3 at Dyess AFB or Whiteman AFB

## ENVIRONMENTAL IMPACT STATEMENT



## What is the No Action Alternative?

NEPA requires the alternatives analysis in the EIS to include a “No Action Alternative.”

However:

- ▶ The B-21 program is a major Department of Defense initiative to ensure the U.S. nuclear triad is and remains effective; therefore, the B-21 program will be implemented whether or not the No Action Alternative is selected.
- ▶ If selected, the DAF would re-evaluate their B-21 phasing approach using military judgement and implement the basing at another, undetermined location.

Therefore, under the No Action Alternative:

- ▶ The B-21 would not beddown at either Dyess or Whiteman AFB.
- ▶ Each installation would continue their individual missions at current levels, which will be used as the baseline for the analysis.



# B-21 Beddown Main Operating Base 2 (MOB 2) or MOB 3 at Dyess AFB or Whiteman AFB

ENVIRONMENTAL IMPACT STATEMENT



## Anticipated Milestone Schedule



**B-21 Beddown Main Operating Base 2 (MOB 2) or MOB 3  
at Dyess AFB  
or Whiteman AFB**

ENVIRONMENTAL IMPACT STATEMENT



# Welcome to this Public Meeting



# **B-21 Beddown Main Operating Base 2 (MOB 2) or MOB 3 at Dyess AFB or Whiteman AFB**

ENVIRONMENTAL IMPACT STATEMENT



## **Welcome**

**To the Public Scoping Meeting  
for the B-21 Beddown Main Operating Base 2  
or Main Operating Base 3 at Dyess Air Force Base, Texas  
or Whiteman Air Force Base, Missouri  
Environmental Impact Statement**



**April 2023**

**What is Public Scoping?** The B-21 Main Operating Base (MOB) 2 and 3 Environmental Impact Statement (EIS) is in the 45-day public comment period and public scoping stage. Directed by the National Environmental Policy Act (NEPA) and Air Force environmental regulations, scoping is a critical first step in the EIS process to make diligent efforts to involve members of the public, cooperating agencies, stakeholders, and tribes in the development of the EIS. The scoping meetings are part of the ongoing public involvement process associated with the EIS. The purpose of tonight's meeting is to provide opportunities to learn about and comment on the

potential alternatives and to identify issues of interest or concern to frame the environmental analyses.



## Agenda

The public scoping meetings will have the following agenda:

### 5:30 - 6:00 p.m.

Air Force presentation

### 6:00 - 7:30 p.m.

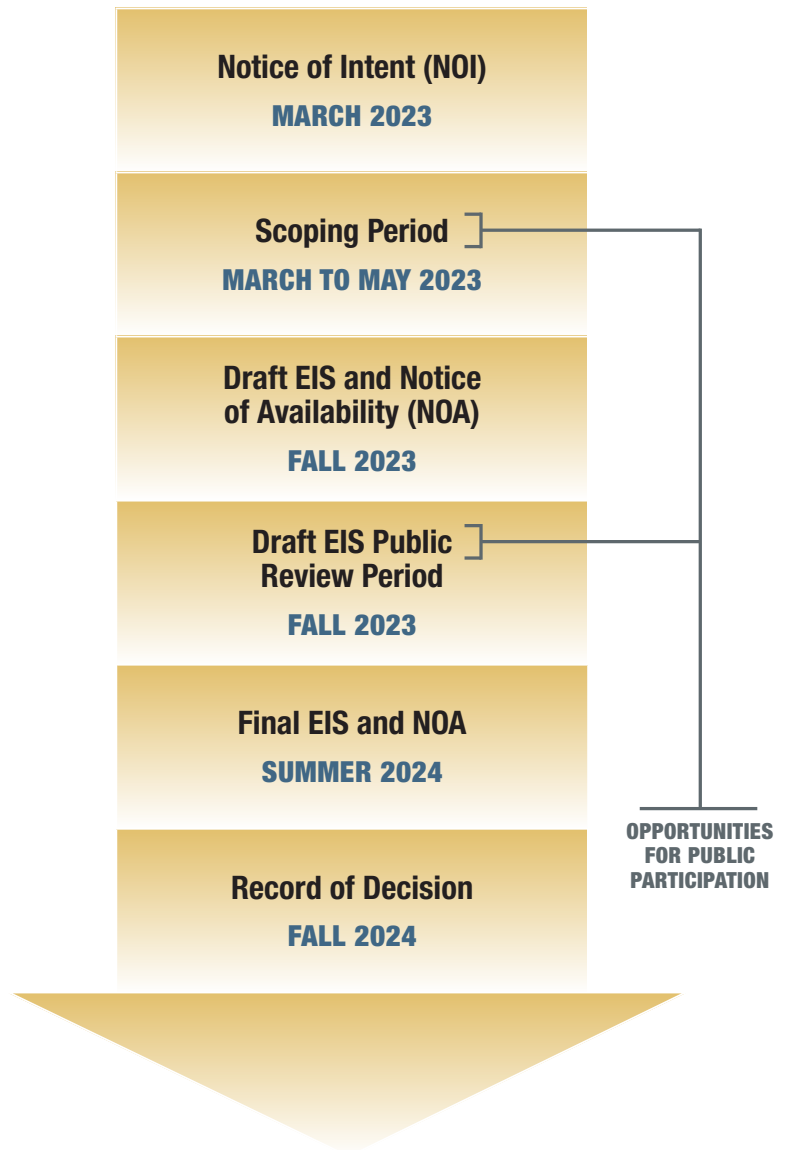
Informal Q&A session and comment submission

## What is NEPA?

NEPA is our national charter for making informed decisions while considering environmental impacts. NEPA requires all federal agencies making a proposal that may significantly impact the environment, to consider:

- ▶ A range of reasonable alternatives.
- ▶ Potential environmental or human health consequences.
- ▶ Tribal, government agency, and public input.

## Timeline





## What Environmental Resources will be Studied in the EIS?

**Air Quality:** Analysis will focus on air emissions from the proposed action and alternatives and the potential impacts to local and regional air quality.

**Airspace Use and Management:** Analysis will address current and proposed use of airspace and potential impacts to airspace use and aviation.

**Biological Resources:** The EIS will address potential impacts to plant and animal species associated with the proposed action and alternatives.

**Cultural Resources:** Analysis will focus on potential impacts to Native American, archaeological, and historic resources associated with the proposed actions and alternatives.

**Environmental Justice:** The EIS will analyze potential environmental justice impacts to low-income and minority populations.

**Hazardous Materials and Solid Wastes:** Analysis will focus on characterizing the types of hazardous and solid materials and wastes utilized and/or produced as a result of the proposed action and alternatives and the potential impacts to the environment.

**Health and Safety:** The EIS will address potential impacts to the health and safety of military members and the public from the proposed action and alternatives.

**Land Use:** Analysis will address potential impacts to current and planned future land uses associated with the proposed action and alternatives.

**Noise:** The EIS will analyze the potential impacts to the public and biological resources from noise generating activities associated with the proposed action and alternatives.

**Physical Resources (Water and Soils):** The EIS will analyze impacts (such as erosion) to soils and geology, as well as potential impacts to surface and groundwater resources (such as streams, springs, wetlands, floodplains, and aquifers) associated with the proposed action and alternatives.

**Socioeconomics:** Analysis will focus on the economic impacts to the local economy as a result of the proposed action and alternatives.

**Transportation:** The EIS will address potential impacts to base and local traffic conditions as a result of the proposed action and alternatives.

**Utilities:** Analysis will include estimated changes in electricity, potable water, wastewater, and natural gas use associated with the proposed action and alternatives.



## What is the Background of the Project?

The Department of the Air Force (DAF) is developing a new bomber aircraft, the B-21 "Raider," which will eventually replace existing B-1 and B-2 bomber aircraft. The beddown of the B-21 will take place through a series of beddowns at three Main Operating Bases (MOBs), referred to as MOB 1, MOB 2, and MOB 3. The DAF previously identified Ellsworth Air Force Base (AFB), Dyess AFB, and Whiteman AFB as potential installations to beddown the B-21 Raider. The DAF chose Ellsworth AFB for MOB 1; therefore, this EIS evaluates potential environmental consequences associated with establishing MOB 2 at the remaining two alternative bases: Dyess AFB or Whiteman AFB.

The B-21 basing action is a series of beddowns. If one of the candidate bases is selected for MOB 2, then the remaining base would subsequently become the MOB 3 beddown location. Air operations and personnel numbers for the MOB 3 beddown are not anticipated to exceed those analyzed in this EIS and construction

activities are anticipated to be the same for either MOB location. Therefore, the analysis presented in this EIS represents potential impacts associated with the beddown actions at either location.

The MOB 2 and MOB 3 beddowns would include B-21 Operations Squadrons, Weapons Instructor Course (WIC), and Operational Test and Evaluation (OT&E) Squadron, as well as a Weapons Generation Facility (WGF). Consequently, in this EIS, potential impacts of these four components (i.e., Operations Squadrons, WIC, OT&E, and WGF) are analyzed for both alternative locations, Dyess AFB and Whiteman AFB.

The B-21 will operate under the direction of the Air Force Global Strike Command (GSC). The B-21 will have both conventional and nuclear roles and will be capable of penetrating and surviving in advanced air defense environments. It is projected to enter service in the 2020s, and the DAF intends to operate a minimum of 100 B-21 aircraft.





## What is the Purpose and Need for the Proposed Action?

As stated in the 2022 National Defense Strategy, which includes the 2022 Nuclear Posture Review and the 2022 Missile Defense Review, the global security environment and “threats to the homeland have fundamentally changed.” The threats we face as a nation are increasingly transregional, multi-domain, and multi functional. These threats frequently do not comply with international rules of law. They include ever-expanding, rapidly developing technologies of other nations.

Thus, the DAF must deter its adversaries, assure its allies, and be prepared to support operations that protect the homeland, respond to aggression with overlapping timelines, wage a global counter terrorism campaign in cooperation with our allies and partners, and improve our ability to respond to emerging threats.

### THE DAF’S PURPOSE OF THE PROPOSED ACTION IS TO:

- ▶ Implement the goals of the National Defense Strategy by modernizing the U.S. bomber fleet capabilities.
- ▶ The B-21 Raider is being developed to:
  - Carry conventional payloads.
  - Support the nuclear triad by providing a visible and flexible nuclear deterrent capability.
  - Assure allies and partners through the U.S. commitment to international treaties.

### THE DAF’S NEED FOR THE PROPOSED ACTION IS TO:

- ▶ Support deterrence capabilities by basing the B-21 at installations that can support the MOB 2 mission.
  - The B-21 will provide the only stealth bomber capability and capacity needed to deter, and if necessary, defeat our adversaries in an era of renewed great power competition.
  - The installation will support training of crewmembers and personnel in the operation and maintenance of the B-21 aircraft in an appropriate geographic location that can provide sufficient airfield, facilities, infrastructure, and airspace to support B-21 training and operations.



# What are the Elements of the Proposed Action?

## Personnel

- ▶ Personnel associated with the B-21 MOB 2 mission would include military personnel and dependents.
- ▶ B-21 mission personnel would include operational and instructor pilots, as well as maintenance personnel to support the Operational Squadrons, WIC, OT&E, and WGF components.
- ▶ The DAF anticipates that the B-21 MOB 2 mission would include an estimated 5,500 total individuals consisting of approximately:
  - 2,500 military personnel
  - 3,100 dependents

## Airfield Operations

- ▶ The annual estimated number of total B-21 aircraft operations is approximately 7,000 per year.
- ▶ Forty percent of all arrival and closed pattern operations and 5 percent of all departure operations would be conducted between 10:00 p.m. and 7:00 a.m.
- ▶ On average, approximately 3.12 sorties would be conducted per day.



## Airspace and Range Utilization

- ▶ The B-21 can adequately train in Class A airspace using Federal Aviation Administration-filed flight plans; however, training in Military Operations Areas (MOAs) and Air Traffic Control Assigned Airspaces (ATCAAs) provide additional flexibility and integration opportunities.
- ▶ Dyess AFB would utilize Bronco, Brownwood, Lancer, Lancer Bridge and Pecos MOAs, as well as the Willie-Roscoe ATCAA.
- ▶ Whiteman AFB would utilize the Smoky Hill Range, Ada, Cannon, Lindbergh, and Truman MOAs, and the Ozark ATCAA.
- ▶ There are no plans to modify any of the airspace.



## Facilities and Infrastructure

- ▶ DAF planners:
  - Used the strengths of each base to optimize the B-21 beddown strategy.
  - Leveraged facilities and infrastructure at each base individually, factoring base specific site constraints, to minimize mission impact, maximize facility reuse, and minimize cost.
  - Identified infrastructure and facility needs by evaluating operational readiness, site constraints, and existing infrastructure.
- ▶ The Proposed Action involves construction, renovation, and demolition projects to support the B-21 MOB 2 basing action.



## Weapons Generation Facility

- ▶ The WGF is a unique facility that would be newly constructed at each B-21 beddown location and will provide a safe and secure location for the storage of DAF nuclear munitions.
- ▶ The WGF will require:
  - A construction footprint of approximately 50 acres and a final WGF compound size of approximately 20 acres.
  - Approximately 7,100 linear feet of double-fencing.
  - Approximately 8 acres of construction, consisting of roughly 82,000 square feet of facilities and 275,000 square feet of parking/pavement areas.
  - Roadway access unique to the location.
- ▶ The WGF provides a consolidated facility within a single, controlled site that accommodates maintenance, storage, and support functions under one roof to provide enhanced operations and security measures for the entire mission.
- ▶ The configuration of the facility allows for efficient movements of all assets in various configurations, which improves both the safety and security associated with mission requirements.



# What is the Dyess AFB Alternative?

The Dyess AFB Alternative would establish MOB 2 at Dyess AFB, Texas, which includes all elements of the Proposed Action.

## Personnel

- ▶ Approximately 4,300 individuals associated with the B-1 mission would depart.
- ▶ Approximately 5,600 individuals are associated with the B-21 mission.
- ▶ End-state personnel would increase by approximately 1,300 individuals.

## Airfield Operations

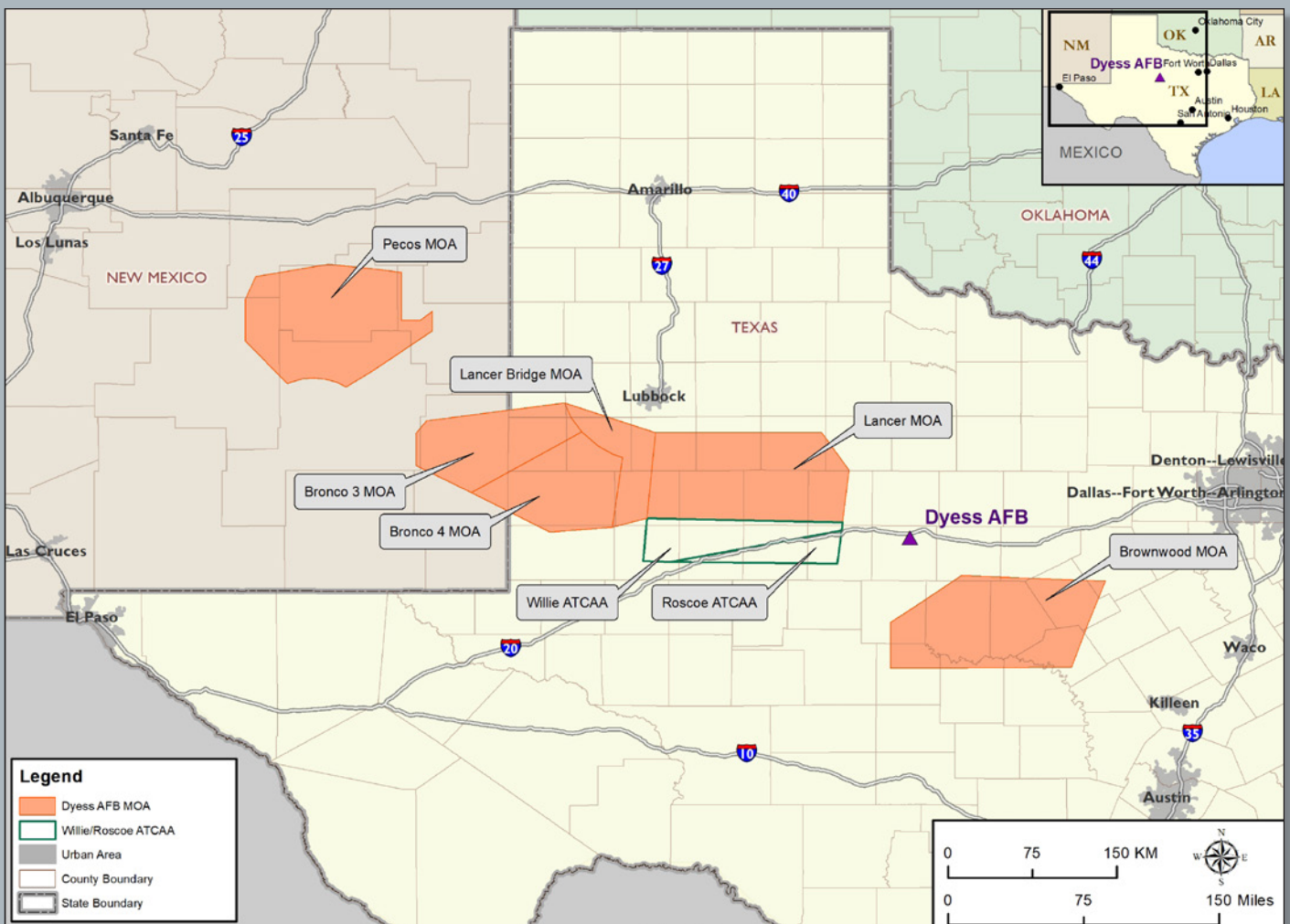
- ▶ End-state airfield operations would decrease by approximately 2,000 operations.

## Airspace and Range Utilization

The map below shows the airspace units that the DAF would utilize under the Dyess AFB Alternative.

- ▶ Includes all associated ATCAAs.
- ▶ No plans to modify any of the airspace as a result of the Proposed Action.

## Dyess AFB Alternative Establish MOB 2 at Dyess AFB, Texas



## Facilities and Infrastructure

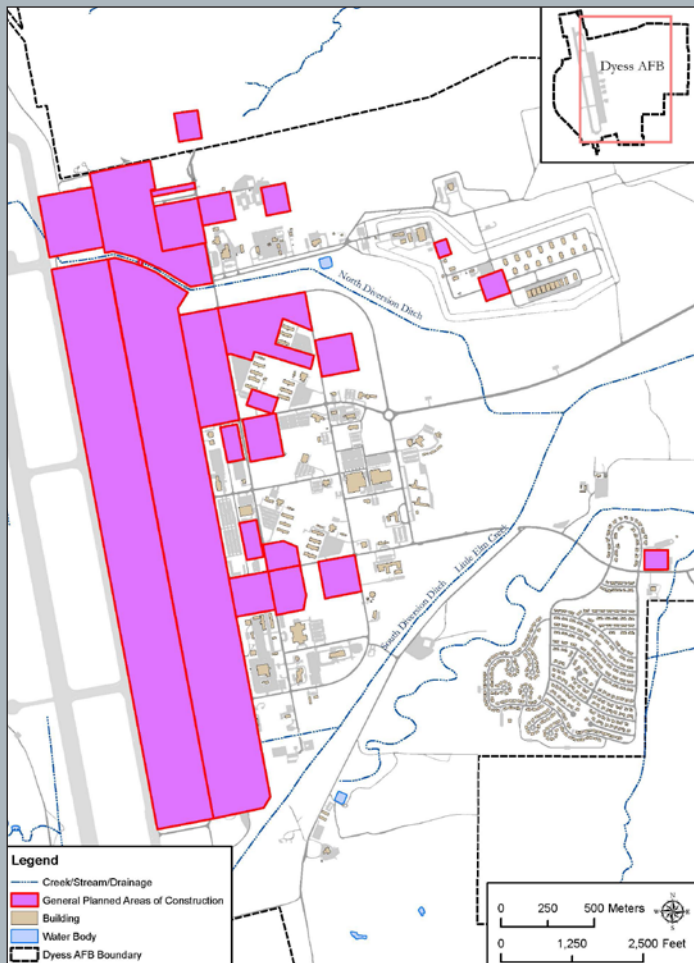
DAF planners considered base-specific site constraints in order to:

- ▶ Minimize mission impact
- ▶ Maximize facility reuse
- ▶ Minimize cost

The Dyess AFB Alternative base-specific plan consists of approximately:

- ▶ 4.2 million square feet of construction
- ▶ 600,000 square feet of renovation
- ▶ 300,000 square feet of demolition

## Dyess AFB Alternative Establish MOB 2 at Dyess AFB, Texas

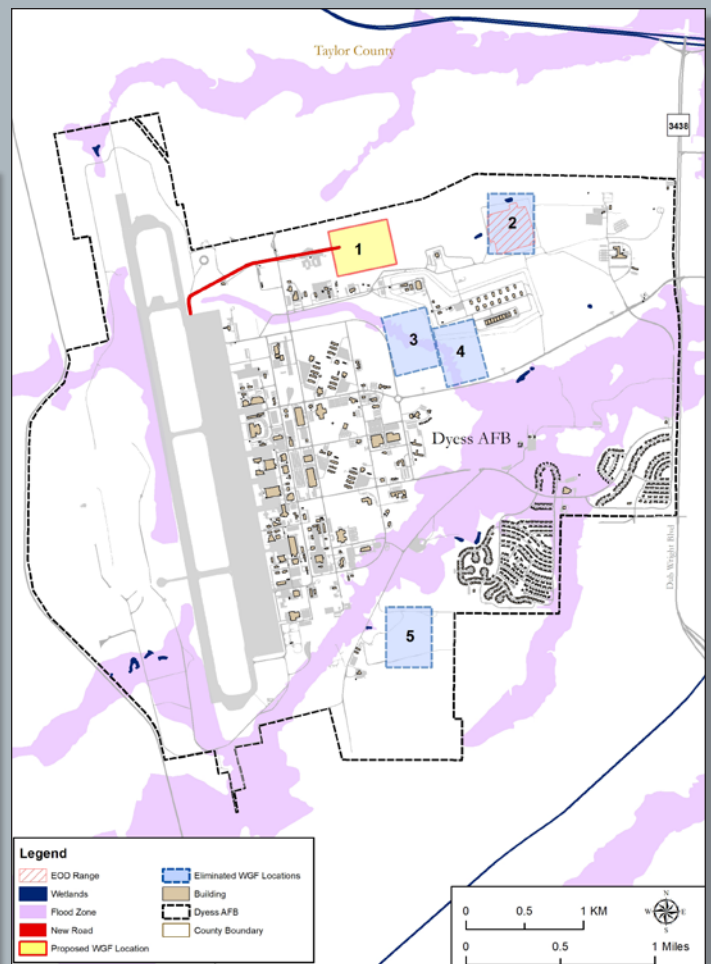


## Weapons Generation Facility

In the MOB 1 EIS, the DAF planners identified five possible locations for the WGF.

Four locations were eliminated due to the presence of one or more negative site evaluation criteria.

Location 1 satisfied all evaluation criteria that are unique to the WGF and is being carried forward as part of the MOB 2 EIS.



*Due to operational security concerns, the specific locations of the facilities cannot be illustrated. General planned areas of construction are shown here.*



# What is the Whiteman AFB Alternative?

The Whiteman AFB Alternative would establish MOB 2 at Whiteman AFB, Missouri, which includes all elements of the Proposed Action.

## Personnel

- ▶ Approximately 4,600 individuals associated with the B-2 mission would depart.
- ▶ Approximately 5,600 individuals are associated with the B-21 mission.
- ▶ End-state personnel would increase by approximately 1,000 individuals.

## Airfield Operations

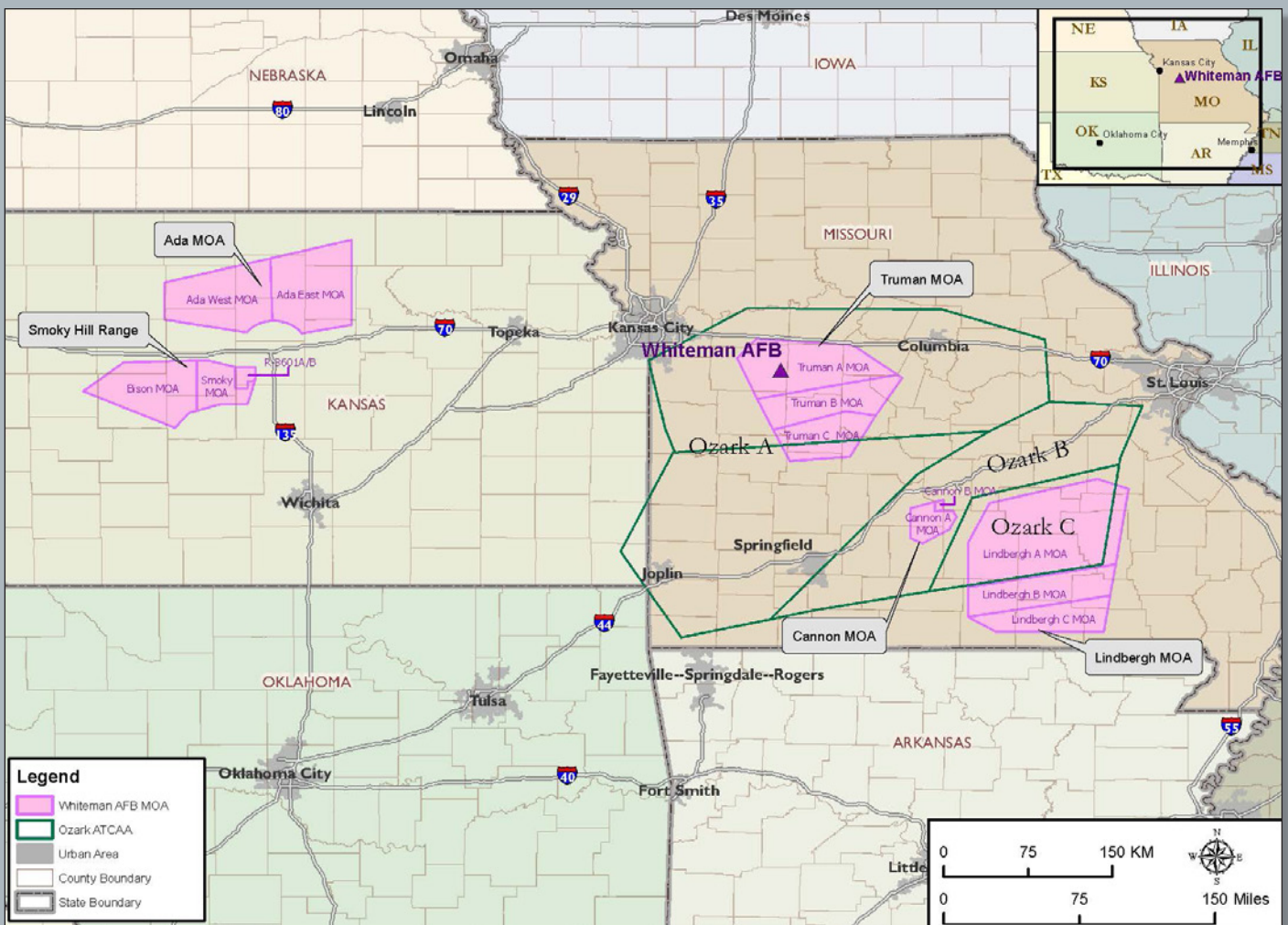
- ▶ End-state airfield operations would increase by approximately 2,000 operations.

## Airspace and Range Utilization

The map below shows the airspace units that the DAF would utilize under the Whiteman AFB Alternative.

- ▶ Includes all associated ATCAAs.
- ▶ No plans to modify any of the airspace as a result of the Proposed Action.

### Whiteman AFB Alternative Establish MOB 2 at Whiteman AFB, Missouri



## Facilities and Infrastructure

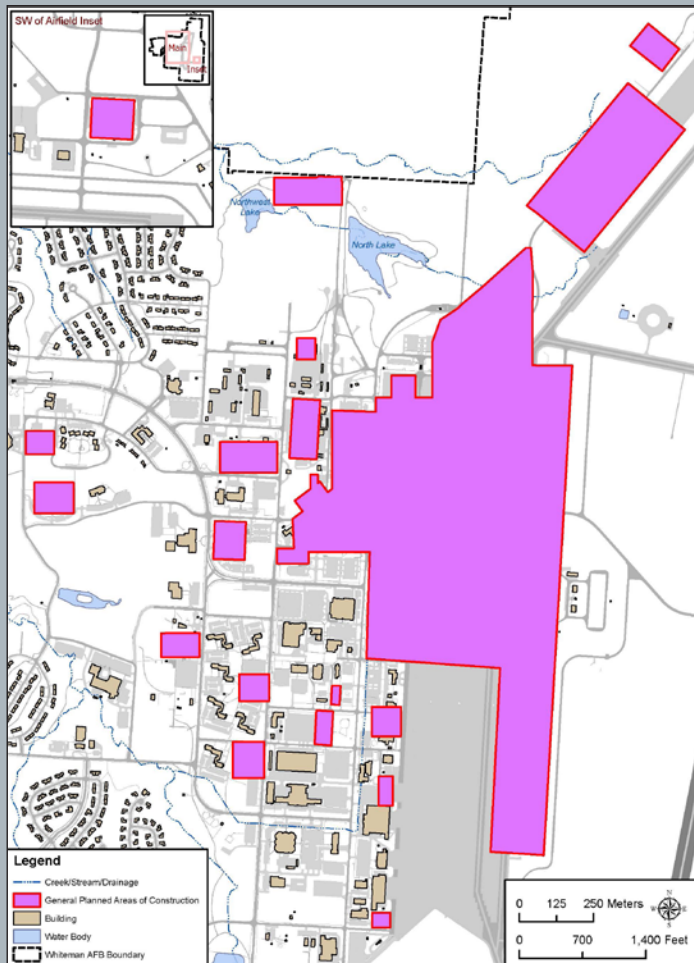
DAF planners considered base-specific site constraints in order to:

- ▶ Minimize mission impact
- ▶ Maximize facility reuse
- ▶ Minimize cost

The Whiteman AFB Alternative base-specific plan consists of approximately:

- ▶ 600,000 square feet of construction
- ▶ 1.7 million square feet of renovation
- ▶ 85,000 square feet of demolition

## Whiteman AFB Alternative Establish MOB 2 at Whiteman AFB, Missouri

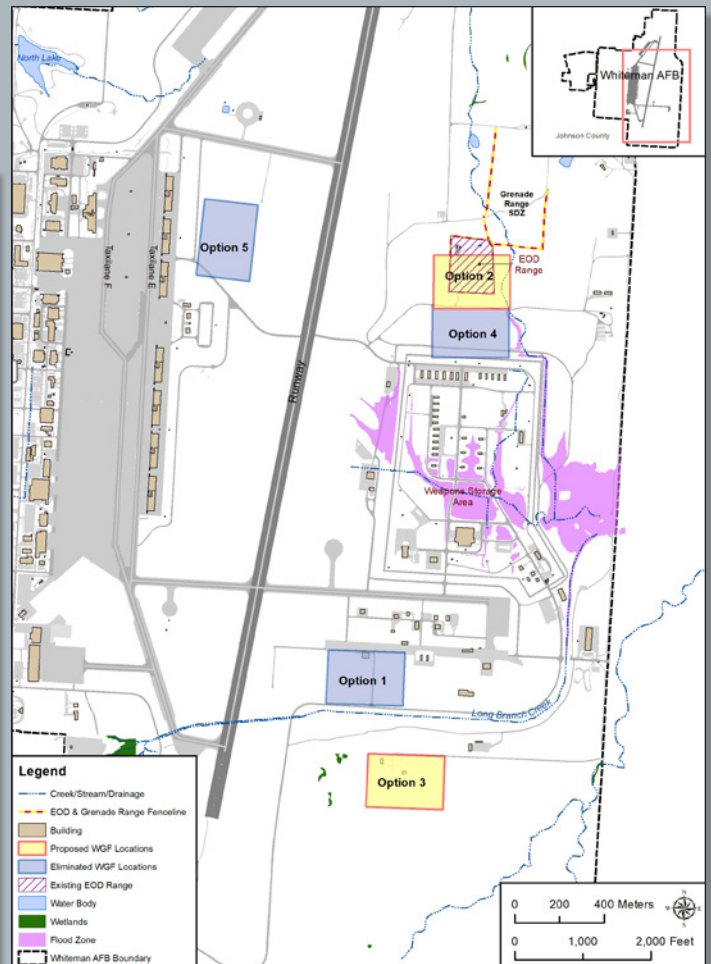


## Weapons Generation Facility

DAF planners identified five possible locations for the WGF, three of which were eliminated due to the presence of one or more negative site evaluation criteria. Locations 2 and 3 were selected as proposed locations because they satisfied site evaluation criteria unique to the WGF.

Location 2 is referred to as the **North WGF Site Subalternative**.

Location 3 is referred to as the **South WGF Site Subalternative**.



*Due to operational security concerns, the specific locations of the facilities cannot be illustrated. General planned areas of construction are shown here.*

Turn page to see No Action Alternative ▶

## What is the No Action Alternative?

NEPA requires the alternatives analysis in the EIS to include a “No Action Alternative.”

### However:

- ▶ The B-21 program is a major Department of Defense initiative to ensure the U.S. nuclear triad is and remains effective; therefore, the B-21 program will be implemented whether or not the No Action Alternative is selected.
- ▶ If selected, the DAF would re-evaluate their B-21 phasing approach using military judgement and implement the basing at another, undetermined location.

### Therefore, under the No Action Alternative:

- ▶ The B-21 would not beddown at either Dyess or Whiteman AFB.

Each installation would continue their individual missions at current levels, which will be used as the baseline for the analysis.



**For more information or to submit scoping comments electronically,  
please visit the public website at  
[www.B21EIS.com](http://www.B21EIS.com)**

### Scoping comments by mail should be sent to:

Leidos  
ATTN: B-21 EIS  
12304 Morganton Hwy #572  
Morganton, GA 30560

### Inquiries should be directed to:

Dyess AFB Public Affairs, ATTN: B-21 EIS,  
7 Lancer Loop, Suite 136, Dyess AFB, TX 79607; (325) 696-4820  
Whiteman AFB Public Affairs, ATTN: B-21 EIS,  
509 Spirit Blvd., Bldg. 509, Suite 116, Whiteman AFB, MO 65305; (660) 687-5727

**Scoping comments should be postmarked by May 10, 2023.**

**WWW.B21EIS.COM**

# **B-21 Beddown Main Operating Base 2 (MOB 2) or MOB 3 at Dyess AFB or Whiteman AFB**

ENVIRONMENTAL IMPACT STATEMENT



## **For More Information:**

Visit [www.B21EIS.com](http://www.B21EIS.com)

**or Contact:**

**Dyess AFB  
Public Affairs  
(325) 696-4820**

**Whiteman AFB  
Public Affairs  
(660) 687-5727**

Please include "ATTN: B-21 EIS" on all correspondence



# **B-21 Beddown Main Operating Base 2 (MOB 2) or MOB 3 at Dyess AFB or Whiteman AFB**

ENVIRONMENTAL IMPACT STATEMENT



## **Privacy Act Advisory**

**Private addresses provided will be compiled to develop the mailing list for those individuals requesting copies of the Draft EIS. However, only the names of the individuals making comments and specific comments will be included in the Draft EIS document.**

**Personal home addresses and phone numbers will not be published in the Draft EIS document.**

# B-21 Beddown Main Operating Base 2 (MOB 2) or MOB 3 at Dyess AFB or Whiteman AFB

ENVIRONMENTAL IMPACT STATEMENT



## Keys to Making Effective Comments:

- ▶ Focus your comments on reasonable alternatives and potential environmental issues.
- ▶ Let us know what environmental and community factors you consider important for analysis in the Draft EIS.
- ▶ Submit comments that are clear, concise, and relevant to the project.
- ▶ Provide constructive solutions with documentation or resources to support your comments or recommendations.
- ▶ Substantive comments are most effective and are those that suggest analysis, methodologies, or provide information for study in the Draft EIS; or that identify potential impacts, reasonable alternatives, or feasible mitigation.
- ▶ Non-substantive comments are those that express a conclusion, opinion, a vote for or against the proposed action or a particular alternative, or otherwise state a personal preference or opinion.

# B-21 Beddown Main Operating Base 2 (MOB 2) or MOB 3 at Dyess AFB or Whiteman AFB

ENVIRONMENTAL IMPACT STATEMENT



## Comment Submittal Process:

Electronic comments:

[www.B21EIS.com](http://www.B21EIS.com)

Submit written comments to:

Leidos

ATTN: B-21 EIS

12304 Morganton Hwy #572

Morganton, GA 30560

*Comments should be postmarked by May 10, 2023.*

# B-21 Beddown Main Operating Base 2 (MOB 2) or MOB 3 at Dyess AFB or Whiteman AFB

ENVIRONMENTAL IMPACT STATEMENT



## Public Scoping Meetings: You Are Invited!

The Department of Defense is developing a new bomber aircraft, the B-21 "Raider," which will eventually replace existing B-1 and B-2 bomber aircraft. The Department of the Air Force (DAF) intends to beddown B-21 aircraft as part of three basing decisions, Main Operating Base (MOB) 1, MOB 2 and MOB 3. The DAF previously selected Ellsworth Air Force Base (AFB) as the MOB 1 location and is now preparing an Environmental Impact Statement (EIS) to evaluate the potential beddown impacts of MOB 2 or 3 at Dyess AFB, Texas or Whiteman AFB, Missouri.

The DAF will host six public scoping meetings to allow members of the public to learn about the project and provide public comments. Public scoping meetings will begin with a 30-minute DAF presentation, followed by an open house. Written comments can be submitted at any time during the in-person scoping meetings or submitted electronically via the public website at [www.B21EIS.com](http://www.B21EIS.com).

### Virtual meetings will be held on the dates/times below:

**Tuesday, April 11, 2023**, 5:30 p.m. – 7:30 p.m. CT

**Thursday, April 13, 2023**, 5:30 p.m. – 7:30 p.m. CT

To register to attend a virtual public scoping meeting, visit [www.B21EIS.com](http://www.B21EIS.com). Meeting links and instructions will be distributed after registering and prior to all virtual public scoping meetings. All virtual public scoping meetings can be accessed by phone at 1-888-788-0099, Webinar ID: 813-5934-9395, Passcode: 570587.

### In-Person meetings will be held from 5:30 to 7:30 p.m. CT on the following dates/locations:

**Tuesday, April 18, 2023**, University of Central Missouri, 108 W. South St., Warrensburg, MO

**Thursday, April 20, 2023**, Knob Noster High School, 504 South Washington Ave., Knob Noster, MO

**Tuesday, April 25, 2023**, Abilene Convention Center, 1100 N 6th St., Abilene, TX

**Thursday, April 27, 2023**, Tye Community Center, 103 Scott St., Tye, TX

**To submit scoping comments electronically, please visit the website at: [www.B21EIS.com](http://www.B21EIS.com).**

### Scoping comments by mail should be sent to:

Leidos  
ATTN: B-21 EIS  
12304 Morganton Hwy #572  
Morganton, GA 30560

### Inquiries should be directed to:

Dyess AFB Public Affairs, (325) 696-4820  
Whiteman AFB Public Affairs, (660) 687-5727

As a result of a delay in the Notice of Intent being published on March 27, 2023, the scoping comment period has been extend to **May 10, 2023**.

**For more information, please visit the public website at [www.B21EIS.com](http://www.B21EIS.com).**





FOLD HERE SECOND

---

---

---

AFFIX  
STAMP

**Leidos**  
**ATTN: B-21 EIS**  
12304 Morganton Hwy #572  
Morganton, GA 30560

FOLD HERE FIRST